

WIDE TOWER ADAPTER BRACKET kit

For use with Atoc's

TANDEM TOPPER™

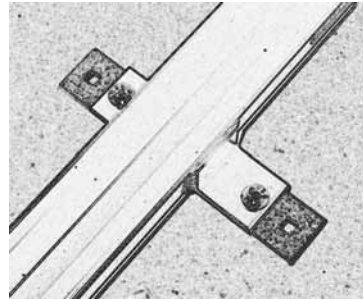
on Thule 415, 75x series, and other base rack towers wider than 3 inches



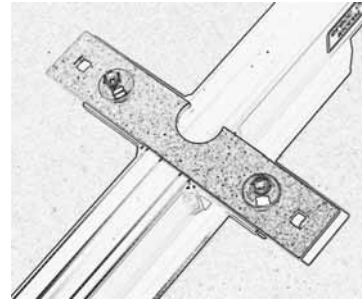
Atoc Inc.
6615 - 180th St. SW
Lynnwood, WA 98037

(425) 745-2131
fax 743-0483
www.Atoc.com

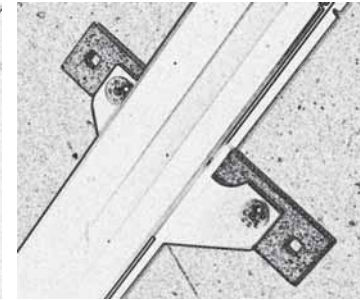
This WTAB kit will optimize the position of your Tandem Topper when installed on multipurpose base racks with support towers wider than 3 inches, such as Thule's # 415, 75x series.



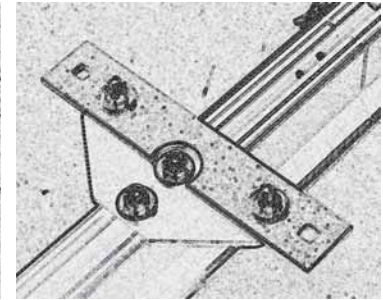
Front top



Front bottom



Rear top



Rear bottom

- 1) Using the 5/16x1 inch carriage bolts, washers, and nuts provide with your WTAB kit, attach a WTAB bracket to your Tandem Topper's front mounting bracket (fixed) and rear mounting bracket (adjustable). See the illustrations above. Line the WTAB brackets up square with the Tandem Topper brackets and firmly tighten the nuts.



- 2) Now install your Tandem Topper onto your base rack following the instructions in the Tandem Topper's instruction manual. Use the long carriage bolts and plastic clamps provided with your Tandem Topper to attach the WTAB brackets to the base rack. The WTABs will allow your Tandem Topper to straddle the base rack's support towers as shown in the pictures. This will optimize the positioning of your Tandem Topper for easier loading and unloading of your tandem or recumbent.